


Shared Space Performance Evaluation: Quantitative Analysis of Pre-Implementation Data


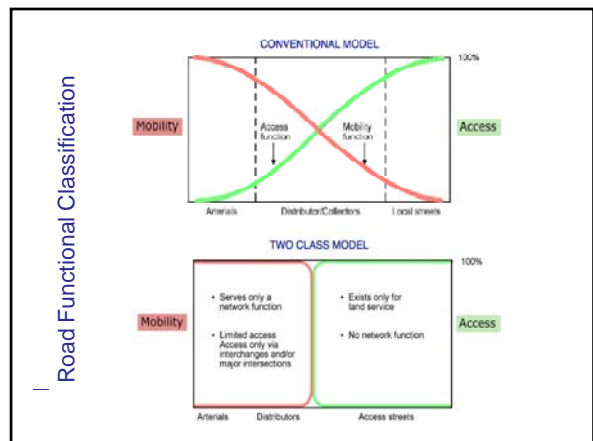
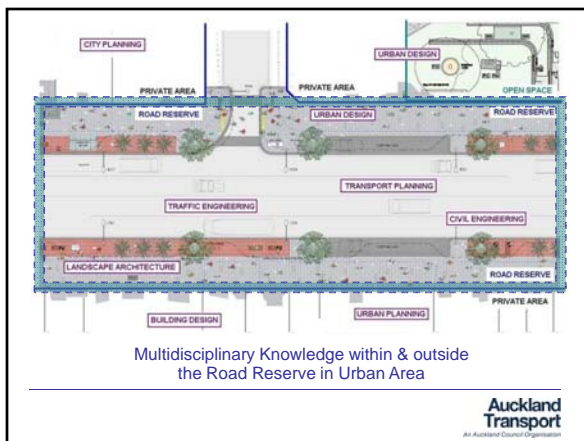
28 March 2011

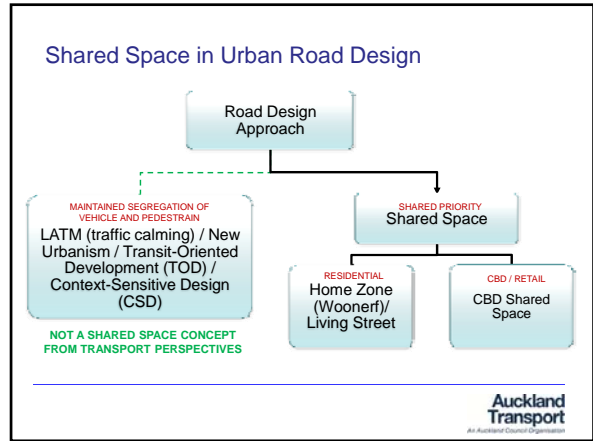
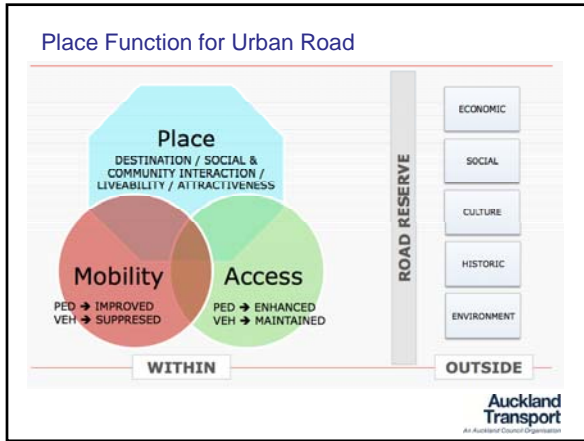
Aut Karndacharuk ME(Hons) MIPENZ CPEng
Dr Doug Wilson & Mitch Tse



Presentation Outline

- Introduction
- Shared Space in Transport Context
- Research on Performance Evaluation
 - Shared Space Objective & KPI
 - 'Before' Data Collection
 - Prelim Quantitative Analysis
- Conclusions



LATM

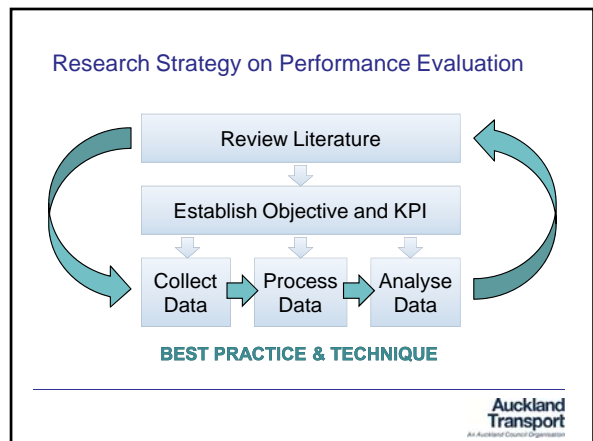
- Reduce vehicle speed and volume
- Maintain segregation of vehicles and pedestrians
- Vehicles still dominate the road corridor space

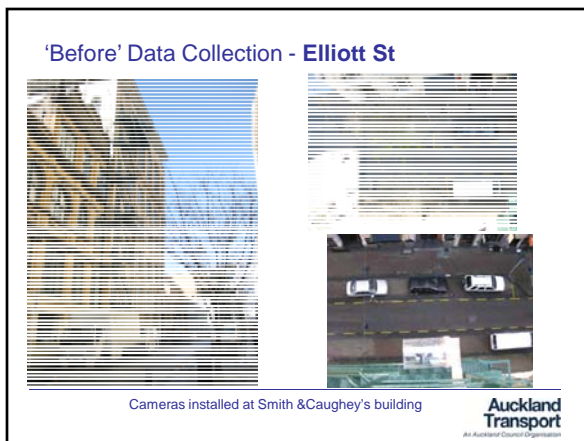
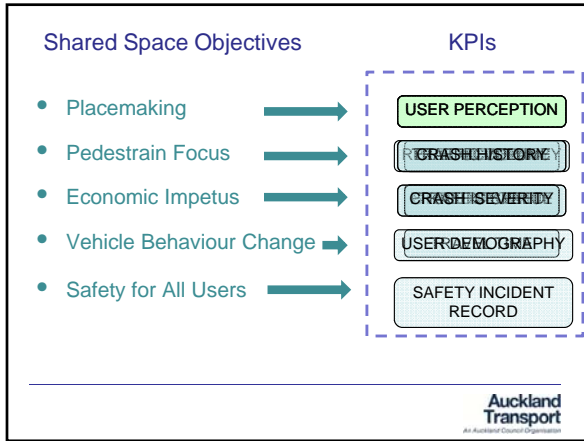
Shared Space

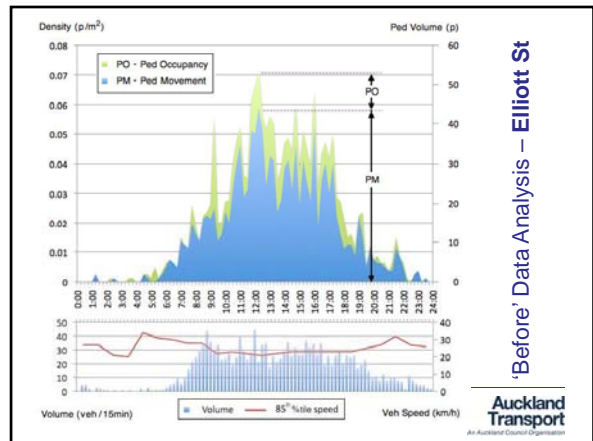
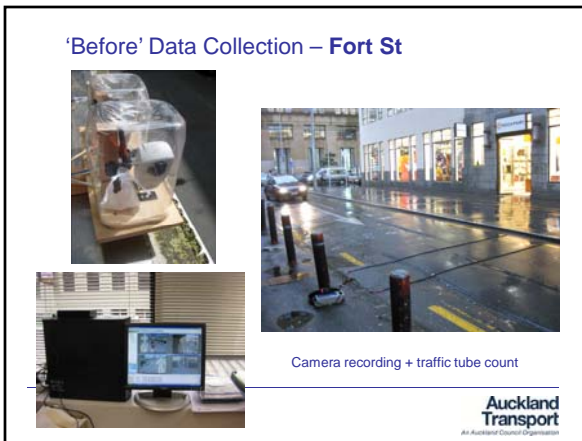
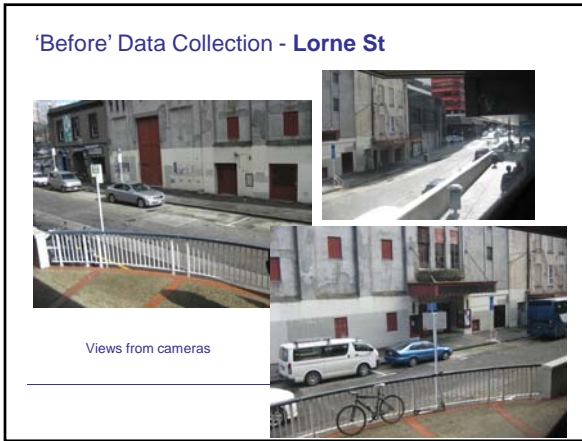
- Reduce vehicle dominance by creating a shared environment
- Level surface with minimum signage & marking
- Motorist to be a guest

COPENHAGEN RETAIL SHARED SPACE

Auckland Transport
An Auckland Council Organisation







'Before' Data Analysis – Active Edges



Auckland Transport
An Auckland Council Organisation

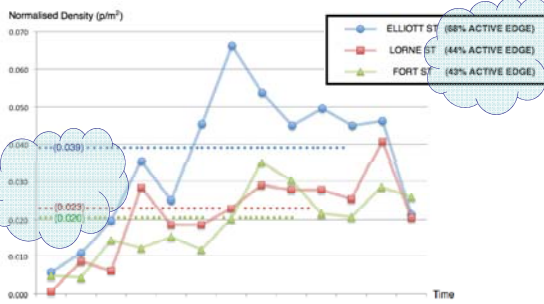
'Before' Data Analysis – Active Edges (Elliott St)



$$\text{ACTIVE EDGE}_{\text{ELLIOTT}} = \frac{250}{370} = 68\%$$

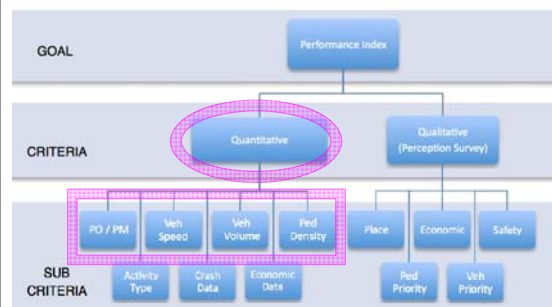
Auckland Transport
An Auckland Council Organisation

'Before' Data Analysis – Comparison



Auckland Transport
An Auckland Council Organisation

Conclusion on Performance Evaluation Research



THE UNIVERSITY OF AUCKLAND
NEW ZEALAND

Auckland Transport
An Auckland Council Organisation

Acknowledgement

- NZ Police and Smith & Caugheys' for camera installation
- Auckland Council's City Transformation for CBD shared space information

Contact Details

Auttapone (Aut) Karndacharuk
Principal Consent Specialist
Auckland Transport
Email: aut.karndacharuk@aucklandtransport.govt.nz



Q + A

